

# TVM | TRUE VISUAL MERCHANDISERS

*Designed to Maximize Product Display and Customer Experience*

True Visual Merchandisers are ideal for in-aisle and end cap refrigeration applications. The improved low profile swing door design eliminates the center mullion. This allows for full product visibility and ease of shopping. The Hydrocarbon refrigeration system will save on energy costs compared to that of open air refrigerators found in similar scenarios.



## IMPROVED

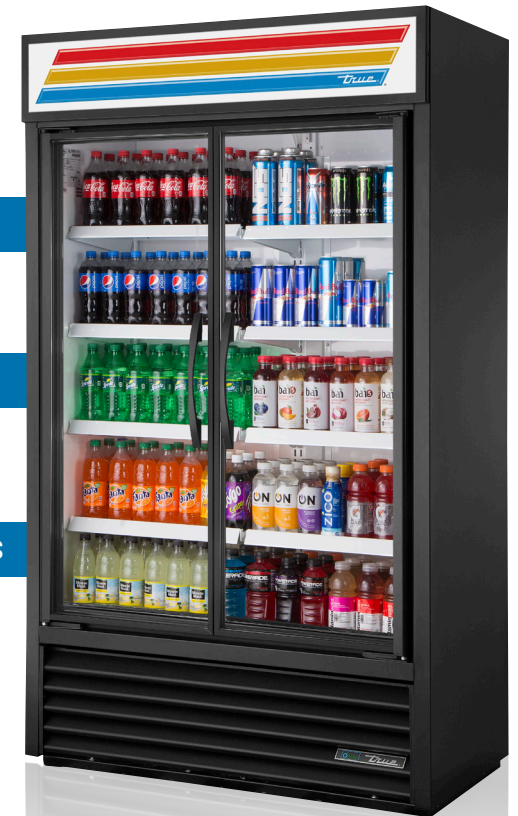
VISIBILITY OF PRODUCT SIMILAR TO OPEN AIR CASES

## IDEAL

FOR IN-AISLE AND END CAP REFRIGERATION APPLICATIONS

## SAVE

ON ENERGY COSTS COMPARED TO OPEN AIR REFRIGERATORS



TVM-48SL-HC-VM01



▶ SLEEK HANDLES



▶ IN-AISLE AND END CAPS

TVM-36SL-HC-VM01



▶ IMPROVED VISIBILITY

TVM-48SL-HC-VM01

# TVM | TRUE VISUAL MERCHANDISERS

*Designed to Maximize Product Display and Customer Experience*

model	doors	# of shelves	amps	crated weight	cabinet dimensions w d' h
TVM-30-HC~VM01	2	4	2.1	260	30 <sup>7</sup> / <sub>8</sub> x 23 <sup>7</sup> / <sub>8</sub> x 54 <sup>7</sup> / <sub>8</sub>
TVM-36SL-HC~VM01	2	4	3.8	TBD	36 x 21 <sup>1</sup> / <sub>4</sub> x 55
TVM-48-HC~VM01	2	8	10.5	520	47 <sup>1</sup> / <sub>4</sub> x 29 <sup>7</sup> / <sub>8</sub> x 78 <sup>3</sup> / <sub>8</sub>
TVM-48SL-HC~VM01	2	8	10.8	600	47 <sup>1</sup> / <sub>8</sub> x 25 <sup>1</sup> / <sub>4</sub> x 78 <sup>3</sup> / <sub>4</sub>
TVM-48SL-48-HC~VM01	2	4	2.1	260	30 <sup>7</sup> / <sub>8</sub> x 23 <sup>7</sup> / <sub>8</sub> x 54 <sup>7</sup> / <sub>8</sub>
TVM-48SL-54-HC~VM01	2	4	2.1	260	30 <sup>7</sup> / <sub>8</sub> x 23 <sup>7</sup> / <sub>8</sub> x 54 <sup>7</sup> / <sub>8</sub>

‡ Depth does not include 1<sup>3</sup>/<sub>4</sub>" (45 mm) for door handles.  
 ‡ Depth does not include 1" (26 mm) for rear bumpers.



TVM-48SL-54-HC-VM01



TVM-36SL-HC-VM01



TVM-48SL-HC-VM01

## DESIGN

True's new generation of TVMs continues the commitment to using the highest quality materials matched with the latest in technical innovation utilizing energy efficient, environmentally friendly hydrocarbon (R290) refrigeration systems. These qualities provide the user with colder product temperatures and lower utility costs in an attractive merchandiser that brilliantly displays packaged food and beverages.

## TVM FEATURES



Sleek rounded door handles



Low profile swing doors with no center mullion



Door bumper



Robust door hinge



TVM-48SL-HC-VM01